

**IMPORTANT:** Before attempting repair on the valve, be sure to completely depressurize the system by removing fluid through a PT port, flush port, or other drain port.

**Tools Required:**

- Flo-Link XL Valve Repair Kit P/N 3519
- Soft face mallet
- Socket Wrench with 1/2" Drive and Extension
- Small flat head screwdriver
- Clean cloth
- O-Ring Lubricant

**Preparing Valve for Removal:**

1. Seat spool by lightly tapping with a soft face mallet.
2. Remove retaining ring with small flat head screwdriver.

**Valve Removal Instructions:**

3. Remove valve spool by "spiraling" the spool out with a 1/2" socket drive. This is accomplished by slightly side-loading the wrench while simultaneously rotating it 360°. Alternative methods are shown below if this technique is not working.

**Alternate Valve Removal Instructions:**

- 3a. If the opposite side of the valve spool is visible, push the valve out of the body.
- 3b. Pull out spool with channel locks while rotating it back and forth.
- 3c. Push spool out via access through the flush port with a soft face tool.

**NOTE: A soft face tool must be used, or damage to the valve can occur.**



Step #1



Step #2



Step #3



Step #3a



Step #3b



Step #3c

**IMPORTANT NOTE:**

**THE 3519 KIT PROVIDES O-RINGS FOR OLDER VALVES AND NEWER VALVES. THE OLDER VALVE USES THE SMALLER CROSS SECTION (1/8") O-RING AND THE NEWER VALVES USE THE LARGER (3/16"). REPLACE THE O-RING USING THE SAME SIZE AS REMOVED. THE LARGE O-RING WILL NOT FIT ON THE OLDER VALVE SPOOL.**

### O-Ring Removal:

4. Pinch around the circumference of the O-ring to form a raised section. Then grasp the raised portion and remove the O-ring. Repeat for other O-ring.
5. CAREFULLY remove the side port O-ring with a small flat head screwdriver or pick. DO NOT gouge the O-ring groove by pushing the screwdriver into the bottom of the groove.
6. Thoroughly clean the spool and inside of the valve body with a clean cloth to remove debris.



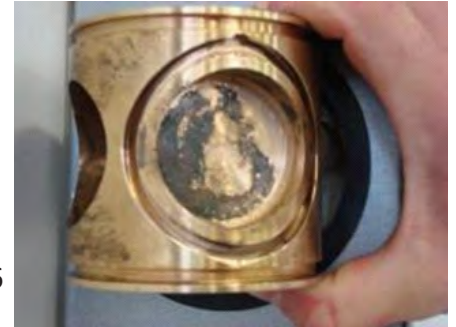
Step #4



Step #5

### O-Ring Replacement:

7. Replace side port O-ring by starting at the round opening and forcing the O-ring into the groove with your thumbs. Work your way around the entire groove until the O-ring is completely seated. Replace the top and bottom O-ring and ensure they are not twisted.
8. Lubricate all O-rings and replace the spool with the side port O-ring oriented opposite the flush port (OFF toward the back of the flow center or valve cabinet).
9. Seat spool by lightly tapping with a soft face mallet.
10. Replace the retaining ring. BE SURE THAT THE RING IS FULLY SEATED. Check this by rotating the spool 360°.



Step #6



Step #7

### **IMPORTANT NOTE:**

**THE 3519 KIT PROVIDES O-RINGS FOR OLDER VALVES AND NEWER VALVES. THE OLDER VALVE USES THE SMALLER CROSS SECTION (1/8") O-RING AND THE NEWER VALVES USE THE LARGER (3/16"). REPLACE THE O-RING USING THE SAME SIZE AS REMOVED. THE LARGE O-RING WILL NOT FIT ON THE OLDER VALVE SPOOL.**



Step #8



Step #9



Step #10

**Geo-Flo Products Corporation  
905 Williams Park Drive  
Bedford, Indiana 47421, U.S.A.  
www.geo-flo.com**